

UNIVERSAL

Central Monitoring Solution



**MONITORING YOUR BUSINESS AND PROPERTIES ANYTIME,
ANYWHERE FROM THE WORLD**

- It supports all the brand DVR, NVR and IPC
- Integrate with power of RTSP, HTTP, TCP & OnVif streaming technology
- Intelligent live alarm monitoring system
- Support with maximum of 1024 DVRs or NVRs
- Smart and Robust technology for security and surveillance for central monitoring
- Multi-language support with Right to Left & Left to Right screens
- Support the DVR & Local Playback, Backup & Download, Reporting, DVR Grouping, Scheduling, E-Map, Google Map, etc.,

Technical Specification

- Industrial Standard 2U Rack Mountable
- i5 processor A9 with 1.8Ghz
- 16GB DDR Memory
- Built in 8TB Video Storage Device
- Option for Audio Recording
- 3-Year Warranty for Hardware



Snappy Universal CMS Server
2U Rack Mountable



Snappy Universal CMS Server
3U Rack Mountable

- Industrial Standard 3U Rack Mountable
- i7 processor A9 with 1.8Ghz
- 32GB DDR Memory
- Built in 8TB Video Storage Device
- Option for Audio Recording
- 3-Year Warranty for Hardware

Software Edition

Standard Edition:

Snappy Universal CMS Standard Edition supports up to **256** DVR or NVR

Professional Edition:

Snappy Universal CMS Professional Edition supports up to **512** DVR or NVR

Enterprise Edition:

Snappy Universal CMS Enterprise Edition supports up to **1024** DVR or NVR

Software Features

- It supports all the brand DVR, NVR and IPC
- Live streaming through RTSP, HTTP, TCP and Onvif
- Live view customization (4, 9, 16, 25, 36)
- Multi-Window Live View
- Full screen Mode



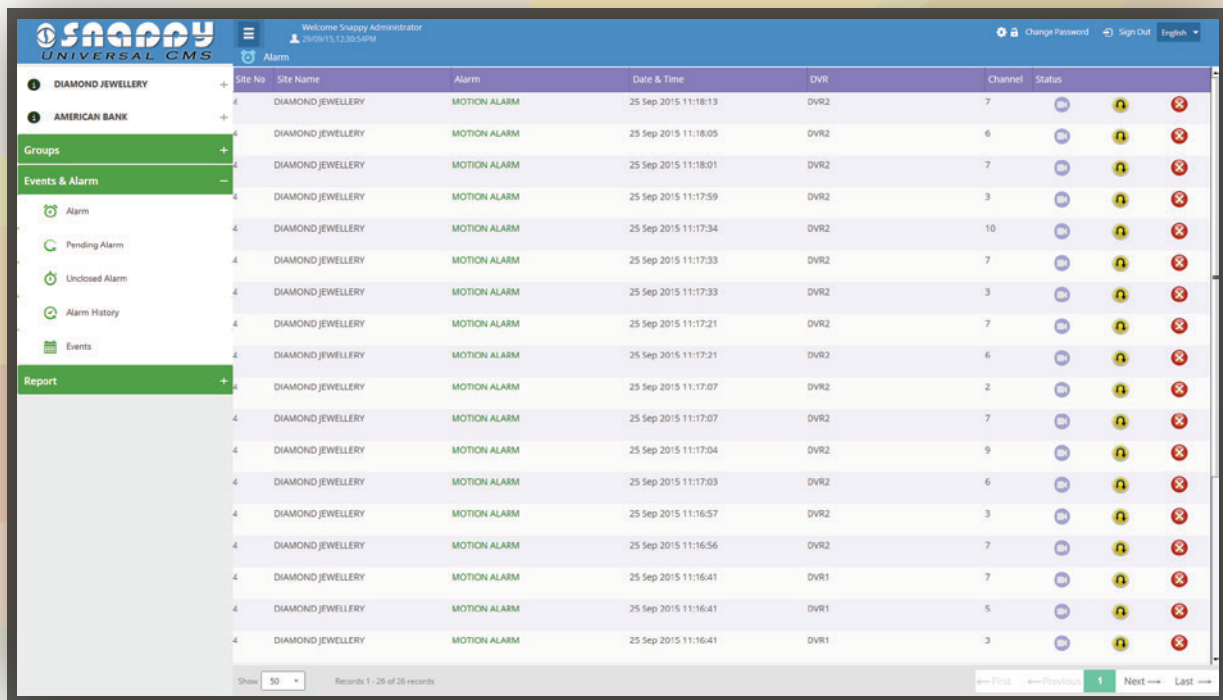
- Toggle
 - Switch between views to 1, 4, 9, 16, 25 and 36
 - Switch between cameras
- Camera Swapping by drag & drop the views
- Snapshot & Triple Snapshot
- Multi-Language Support with appropriate screen alignment (LTR or RTL)

Intelligent Alerts

- ★ **Record Missing Alerts (Day wise OR Selected date)**
- ★ **DVR Status Notification Alert (Online or Offline)**
- ★ **Recording Stop Alert**
- ★ **Schedule Stop OR Change Alert**
- ★ **Alert notification send through EMAIL or SMS**

Event and Alarm Management

- Motion Detection
- Shelter Alarm
- Video Loss
- Disk Full & Disk Error

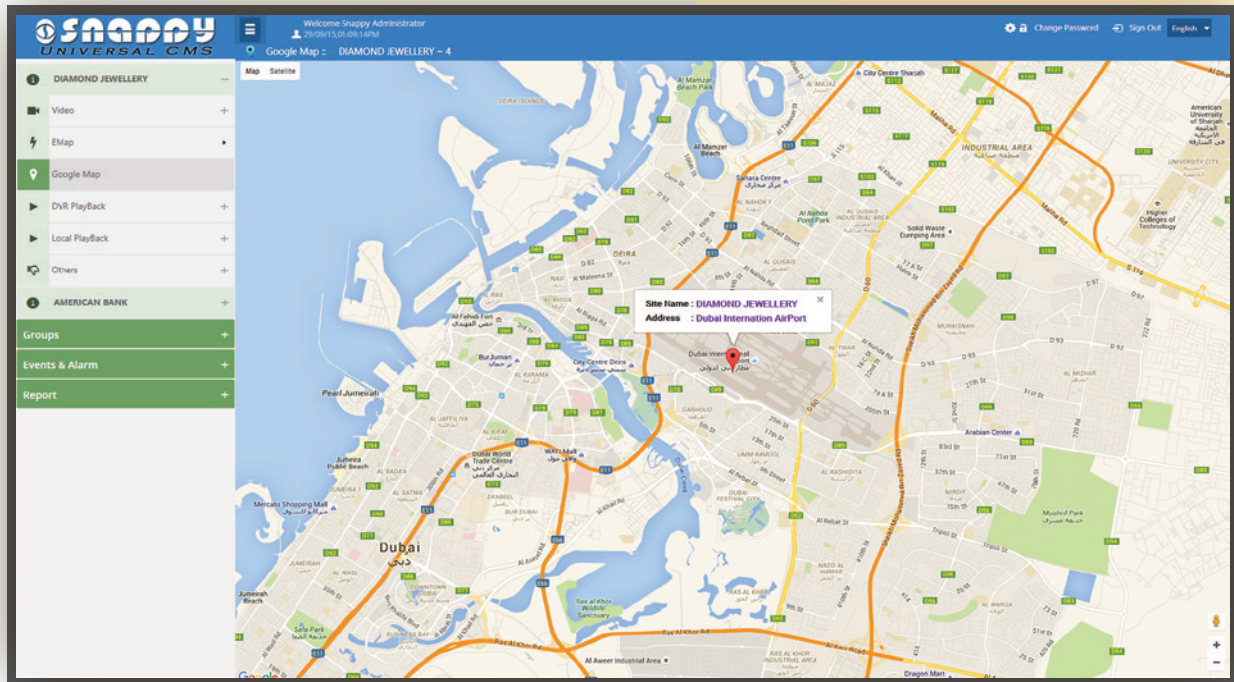


Site No.	Site Name	Alarm	Date & Time	DVR	Channel	Status
4	DIAMOND JEWELLERY	MOTION ALARM	25 Sep 2015 11:18:13	DVR2	7	
4	DIAMOND JEWELLERY	MOTION ALARM	25 Sep 2015 11:18:05	DVR2	6	
4	DIAMOND JEWELLERY	MOTION ALARM	25 Sep 2015 11:18:01	DVR2	7	
4	DIAMOND JEWELLERY	MOTION ALARM	25 Sep 2015 11:17:59	DVR2	3	
4	DIAMOND JEWELLERY	MOTION ALARM	25 Sep 2015 11:17:34	DVR2	10	
4	DIAMOND JEWELLERY	MOTION ALARM	25 Sep 2015 11:17:33	DVR2	7	
4	DIAMOND JEWELLERY	MOTION ALARM	25 Sep 2015 11:17:33	DVR2	3	
4	DIAMOND JEWELLERY	MOTION ALARM	25 Sep 2015 11:17:21	DVR2	7	
4	DIAMOND JEWELLERY	MOTION ALARM	25 Sep 2015 11:17:21	DVR2	6	
4	DIAMOND JEWELLERY	MOTION ALARM	25 Sep 2015 11:17:07	DVR2	2	
4	DIAMOND JEWELLERY	MOTION ALARM	25 Sep 2015 11:17:07	DVR2	7	
4	DIAMOND JEWELLERY	MOTION ALARM	25 Sep 2015 11:17:04	DVR2	9	
4	DIAMOND JEWELLERY	MOTION ALARM	25 Sep 2015 11:17:03	DVR2	6	
4	DIAMOND JEWELLERY	MOTION ALARM	25 Sep 2015 11:16:57	DVR2	3	
4	DIAMOND JEWELLERY	MOTION ALARM	25 Sep 2015 11:16:56	DVR2	7	
4	DIAMOND JEWELLERY	MOTION ALARM	25 Sep 2015 11:16:41	DVR1	7	
4	DIAMOND JEWELLERY	MOTION ALARM	25 Sep 2015 11:16:41	DVR1	5	
4	DIAMOND JEWELLERY	MOTION ALARM	25 Sep 2015 11:16:41	DVR1	3	

- Manage all the events & alarm from all the DVR located on all the sites
- Customize the events & alarm with selected timing
- Pending OR closed the selected alarm
- See all the history of all the events & alarm with search option

Google Map Integration

- See the real location of all the site on Google map



E-Map Integration

- Rendering the floor plan of all the sites
- Positioning the cameras through floor plan of the particular site
- See the live view of particular camera from floor plan



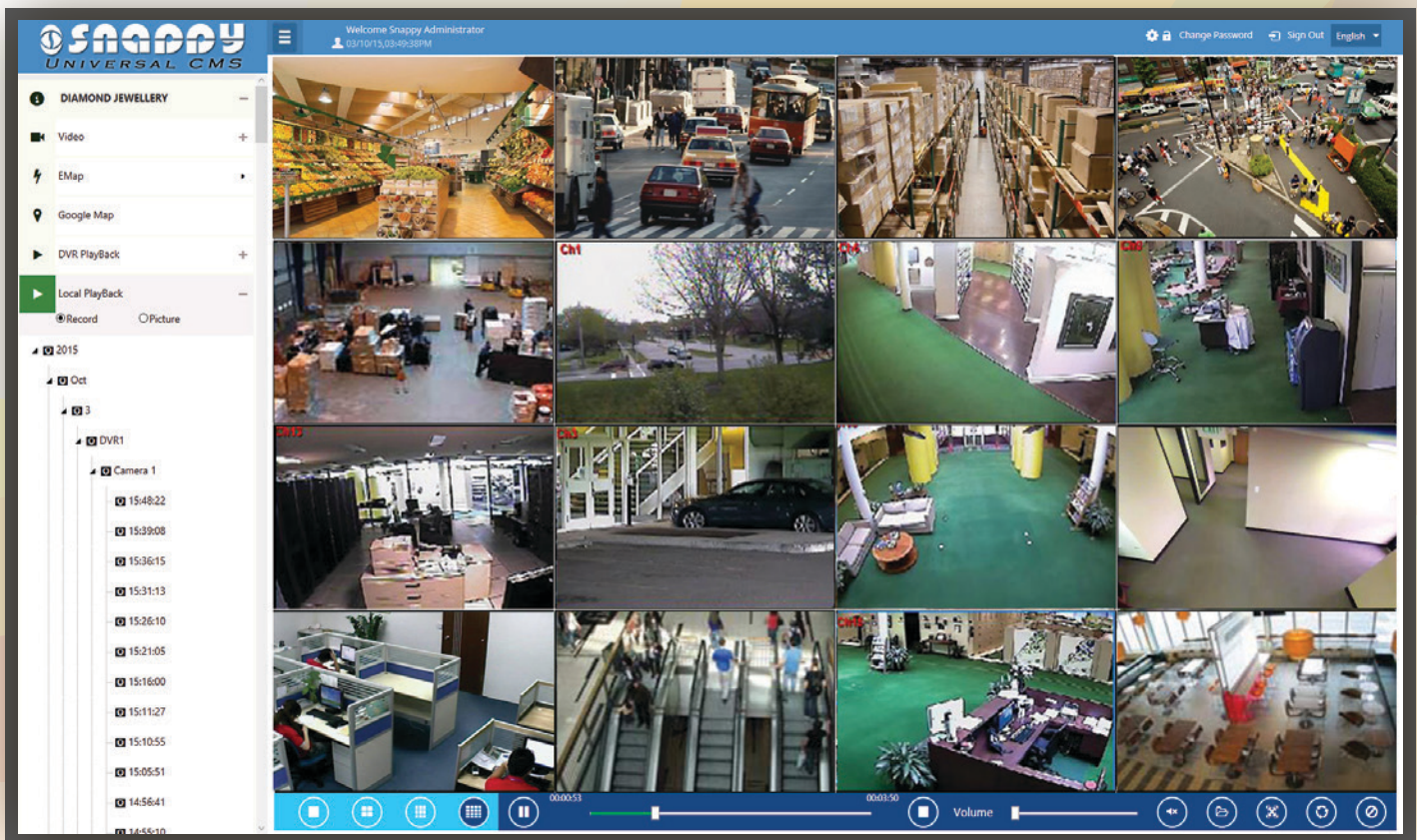
Playback

DVR Playback

Play the recorded videos or images from selected DVR located from selected sites. It support multi view also.

Local Playback

Play the recorded videos of selected DVR from selected site from local server. It support multi view with zooming option.

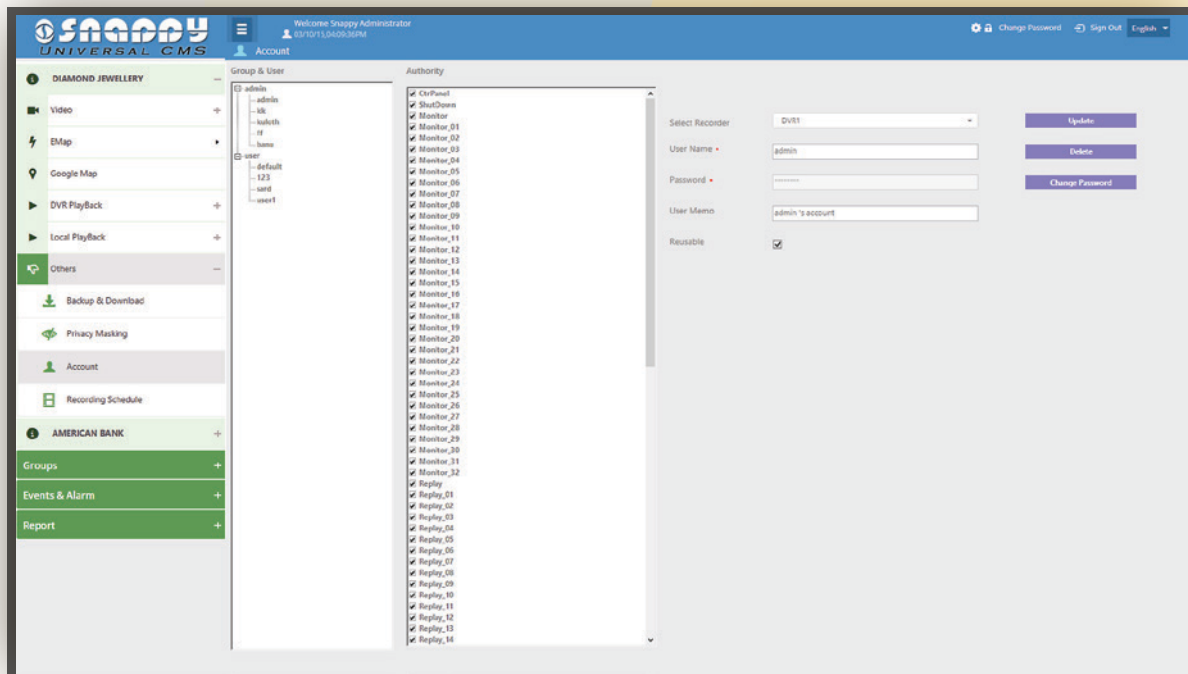


- Play the selected camera recording files on selected date in selected DVR
- Playback window also supports the multi view (1, 4, 9, 16)
- Pause, Stop, Step Forward, Step Backward the selected video file
- Control the volume of video file
- Can see the time frame of the video file

User Management

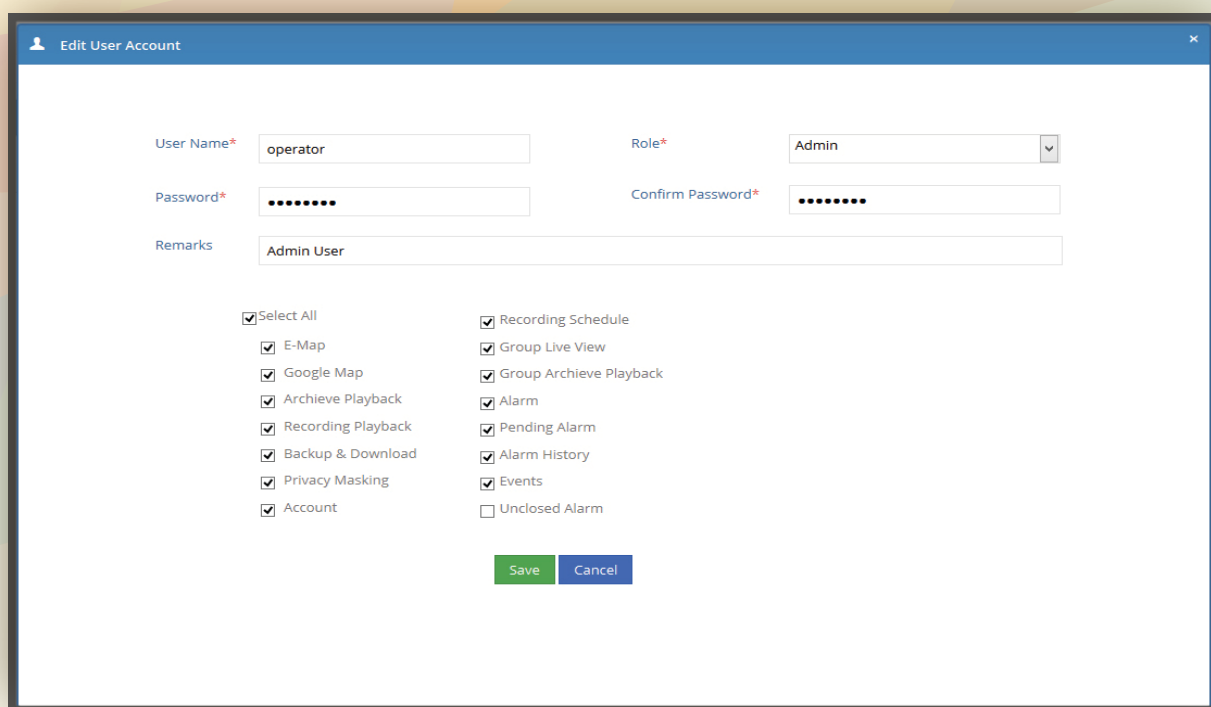
DVR or NVR User Management

- Add, Delete, Edit and Update the DVR users with their privileges
- Manage the user groups with their privileges



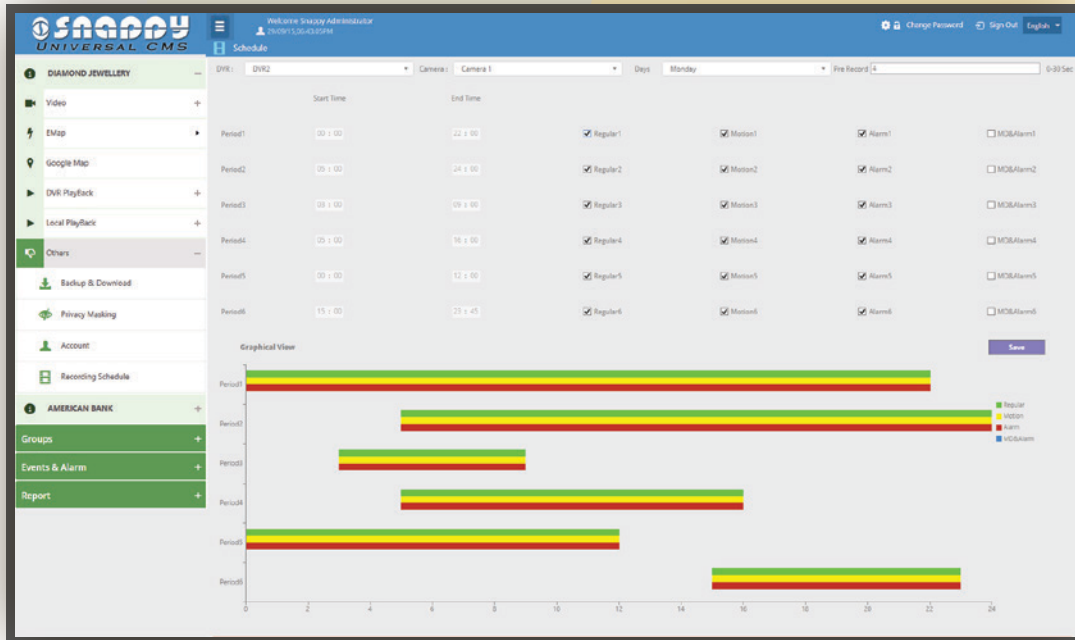
Application User Management

- Add, Delete, Edit and Update the DVR users with their privileges
- Manage the user groups with their privileges



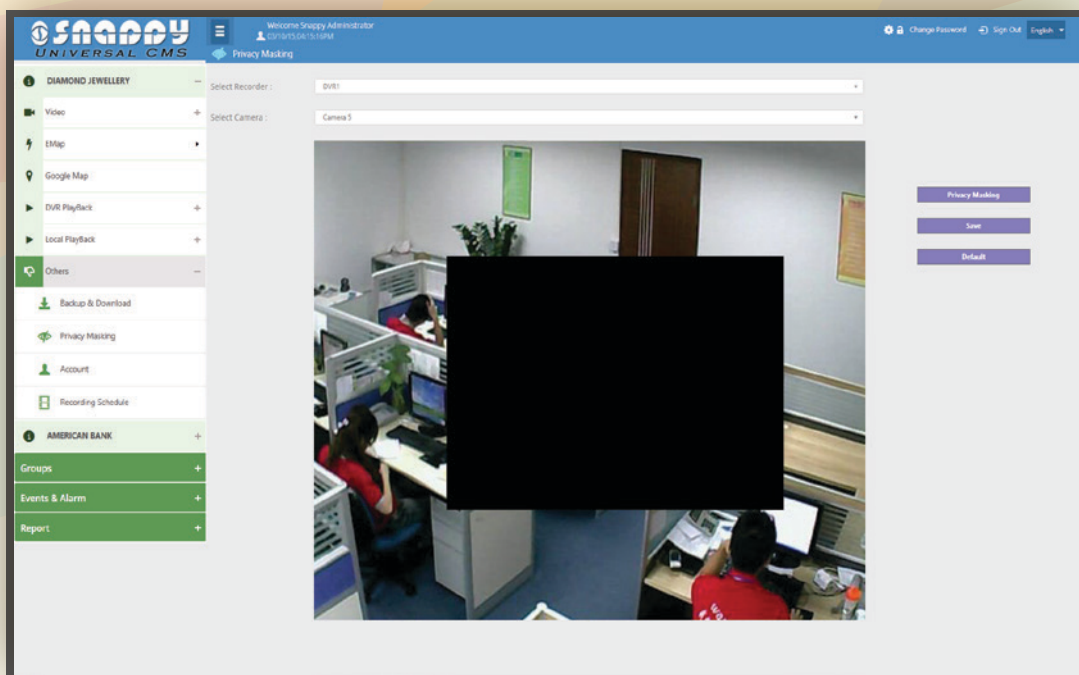
Recording Schedule

- DVR based recording schedule
- Motion detection recording schedule
- Interactive graphical schedule view
- ALARM triggering recording schedule
- Regular or Round the clock recording schedule



Privacy Masking

- Mask or Overlay the selected region of particular camera in selected DVR of selected site



User Configurable Recording Location

Operator Recording Path*	<input type="text" value="C:\"/>	
Recycle Size(MB) *	<input type="text" value="4098"/>	
Recording Interval(MIN)*	<input type="text" value="5"/>	
Is Enable	<input checked="" type="checkbox"/>	
E-Map	<input type="radio"/> Main Stream	<input checked="" type="radio"/> Sub Stream
Full Screen	<input type="radio"/> Main Stream	<input checked="" type="radio"/> Sub Stream
Alarm	<input type="radio"/> Main Stream	<input checked="" type="radio"/> Sub Stream

Recording & Recycle Settings

- Configurable local recording path & recording interval
- Enable or Disable local video recording
- Recycle size can be configurable
- Configurable MAIN or SUB stream for video for E-Map, Alarm or Full screen

User Configurable Camera View

Shuffle By Views	<input checked="" type="checkbox"/>	Time Interval	<input type="text" value="00"/> Min <input type="text" value="02"/> Sec
Shuffle By Cameras	<input checked="" type="checkbox"/>	Time Interval	<input type="text" value="00"/> Min <input type="text" value="02"/> Sec

Toggle Settings

- Enable or Disable toggle by Views or Camera
- Configurable the time interval for toggling

User Configurable ALARM Notification

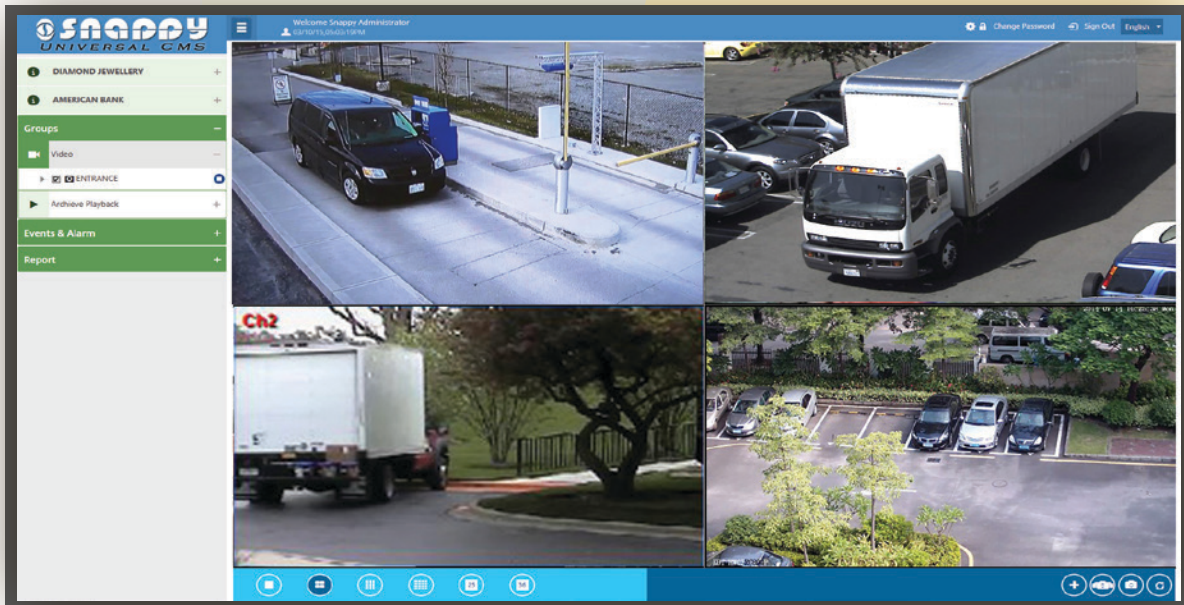
<input checked="" type="checkbox"/>	If alarm not closed within <input type="text" value="60"/> minutes, move to unclosed alarm tab
or	
<input type="checkbox"/>	Move unclosed alarm to unclosed alarm tab, if alarm reaches <input type="text" value="100"/> count

Alarm and Event Settings

- Configurable alarm closing interval
- Configure when alarm move to unclosed alarm

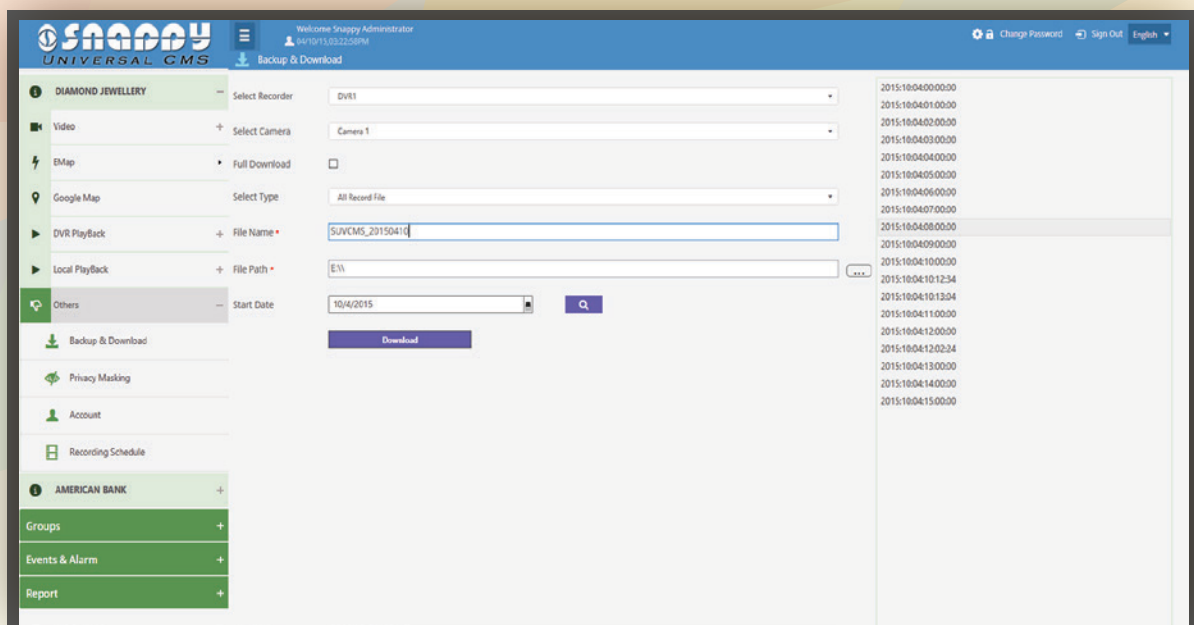
Camera Grouping

- Group the selected cameras from selected DVR from selected sites
- Delete or Modify the existing group
- Group wise playback support



Backup and Download

- Backup and Download the all the recording files from selected DVR from selected sites
- Scheduled backup (Selected Day, Daily, Monthly or Custom)



Email Server Configuration

SMS Server OR Gateway Configuration

DynDNS Integration

Access Control Integration

Intercomm Integration

Interactive Reports

UNIVERSAL

Central Monitoring Solution

WHERE TO BUY



USA

UK

Netherland

Africa

UAE

Qatar

India

China

Hongkong

Malaysia

Singapore

Australia

Research and Development:

Snappy,

Orlyplein 85,
1043 DS Amsterdam,
The Netherlands.

Tel : +31 (0) 204037397

Fax : +31 (0) 204037310

Finance and Management:

Snappy Middle East,

Dubai Airport Free Zone,
PO Box - 27106,
United Arab Emirates.

Marketing and Call Center:

Snappy Call Center,

F3 Level 1, Sri Sai Building, 9/5 Soundarajan street
T.Nagar, Chennai – 600 017,
Tamil Nadu - India.

Email : sales1@snappyeurope.com

sales2@snappyeurope.com

Skype : sales1.snappyeurope

sales2.snappyeurope

Factory:

Shenzhen JiaTeAn Technology Co. Ltd.

R608, Shayuanpu Building,
Minzhi Blvd, Longhua New District,
Shenzhen City, Guangdong Province,
China - 518131